

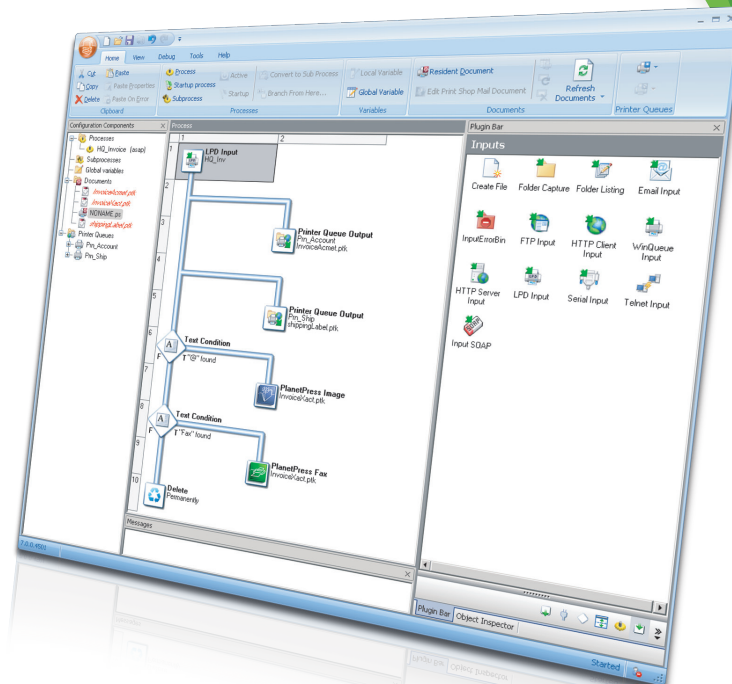
## PLANETPRESS.SUITE



## THE WORKFLOW TOOLS

PlanetPress Suite includes three workflow tools for the automation of the processing, distribution and printing of your business documents.

Installed on a server, they can be set up to automate all tasks related to the document processes of an organization, snapping seamlessly to the systems already in place. From one central location they can capture data streams from almost any source and based on the information found in the data, execute the appropriate task, whether it's routing a print job to the appropriate local or remote printer, splitting the data into several files, query ODBC-compliant databases for additional information, apply business rules, redirect conditionally etc. They can send documents to PlanetPress Imaging in order to create a digital version that can be automatically emailed, faxed or archived.



## PlanetPress Watch

PlanetPress Watch is the perfect workflow tool when the only mode of printing required is printer centric. It makes a minimal use of bandwidth and achieves maximum print performance and is perfect for high volume production printing on a dedicated printer or for remote and distributed printing.

## PlanetPress Office

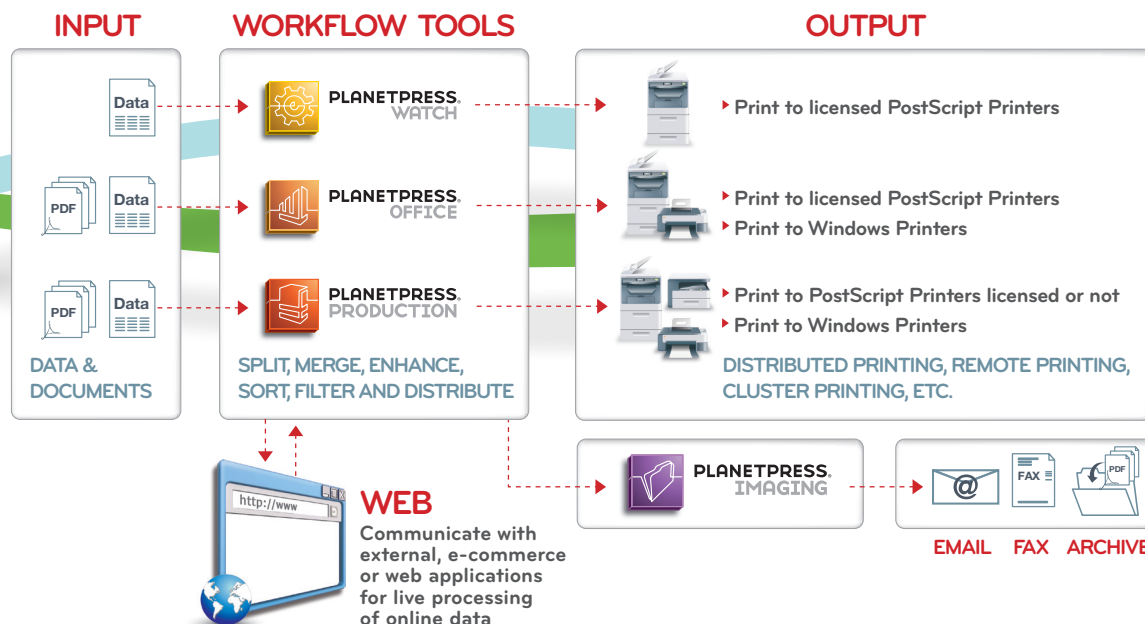
PlanetPress Office is perfect for medium print volumes where you want the ability to capture existing documents instead of data to enhance them and/or add in workflow capabilities. It can print to any printer using a Windows® driver without a license, when basic control of finishing options is sufficient.

## PlanetPress Production

PlanetPress Production combines the abilities of the other two workflow tools, but adds to that the ability to print in Optimized PostScript to unlicensed printers, enabling larger print jobs to be produced in the fastest possible time while controlling page-based finishing and sub-finishing options.

### Input and output capabilities:

	PLANETPRESS. WATCH	PLANETPRESS. OFFICE	PLANETPRESS. PRODUCTION
<b>Input Types</b>			
<b>Data</b> (ASCII, Line Printers, CSV, Databases, Channel Skip, XML)	✓	✓	✓
<b>Documents</b> (PDF – any document which can be converted to PDF, independently of the application it was created with)		✓	✓
<b>Output Types</b>			
<b>OL Licensed PostScript® printers</b> (Printer Centric Optimized Postscript)	✓	✓	✓
<b>Any printer using a Windows® driver</b>		✓	✓
<b>Unlicensed PostScript printers</b> (Optimized PostScript)			✓
<b>Standard PDF</b>		✓	✓



## THE WORKFLOW TOOLS FEATURES:

### Document Input

PlanetPress Office and PlanetPress Production can capture and process fully composed documents by extracting their text contents and applying business rules whether to add or modify contents, apply finishing options, set distribution and archiving rules or split/concatenate existing jobs. The Document Input can process any ready-made PDF file or any print stream sent to the new Objectif Lune Printer Driver by any Windows application.

### PDF handling tools

PlanetPress Office and PlanetPress Production offer true automated PDF workflow with native PDF creation, tasks to split and merge PDF files and workflow conditions based on PDF contents.

### Metadata

Metadata is data about other data. The PlanetPress Workflow tools have a Metadata feature used to extract data attributes from data found in your documents in order to further process them. For example, zip codes and page count can be extracted for address sorting, customer numbers can be extracted for cross reference with a separate database or summary information can be extracted for archiving. The possibilities are endless!

### Numerous data sources

Data can be captured from the host via LPD, Windows-based print queues, shared folders, email messages (Outlook and POP3), ODBC-compliant databases, Telnet, FTP and RAW Socket printing.

### Output options

Data or digital documents can be sent over a LAN/WAN to Desktop, Multifunctional and/or Production printers, folders, FTP sites, email or fax recipients and more.

### Extended scripting capabilities

The PlanetPress Workflow tools will automate the execution of any ActiveScript program (VBScript, JScript, PerlScript, etc.) installed on your system to further process your data, allowing custom functions to be a part of the workflow.

### HTTP Server

The PlanetPress Workflow tools include an HTTP Server, able to process HTTP GET/POST requests. Optimize your workflow with real-time fulfillment of requests and gain advantages from interconnectivity with e-commerce applications.

### HTTP Client

The PlanetPress Workflow tools can also actively communicate with a third-party Web Server and launch a process using the response from that Web Server. Use the PlanetPress Workflow tools to automatically monitor the content of a third party web server for online data repurposing.

### SOAP connectivity

The SOAP connector handles all types of complex applications, allowing PlanetPress Suite to communicate with just about any third party application. In addition, all PlanetPress Suite workflow tools can be configured as SOAP servers, allowing third-party applications - such as Web-based front ends - to submit jobs directly into PlanetPress Suite remotely.

### Bidirectional communications

To eliminate downtime, use SNMP conditions to reroute the data if the printer is offline, out of paper, etc. The PlanetPress Workflow tools also allow you to optimize output productivity by easily implementing distributed printing workflows.

### Windows service

PlanetPress Workflow tools and PlanetPress Imaging run as Windows services for enhanced security and peace of mind.

### Cluster printing

Automatically distribute PlanetPress Design documents to clusters of printers. Perform queue balancing, round robin or job splitting for greater speed and efficiency.

### Job splitter

Set rules to split single jobs into several data streams based on values or characters found in the data.

### Reprints

Backup all print jobs for a user-defined period, allowing for reprints.

### Extended logging capabilities

Each job is logged. The PlanetPress Workflow tools interface with the Windows Event logs to provide valuable information helping you with the ongoing development of your operation.

### Automatic Database conversion

The database plug-in has the ability to convert data files in XML, CSV, or fixed-length mode on the fly.

### Unlimited Custom Variables

Define, set and use an unlimited number of custom variables. Users can create process-wide (aka Local Variables) custom variables that can be reused across all branches of a single process, and configuration-wide (aka Global Variables) custom variables allowing information to be carried across processes, making inter-process communication possible.

**OBJECTIF LUNE**

BUSINESS COMMUNICATIONS - YOUR WAY

For more information contact  
your local office, or visit:

[www.objectiflune.com](http://www.objectiflune.com)